

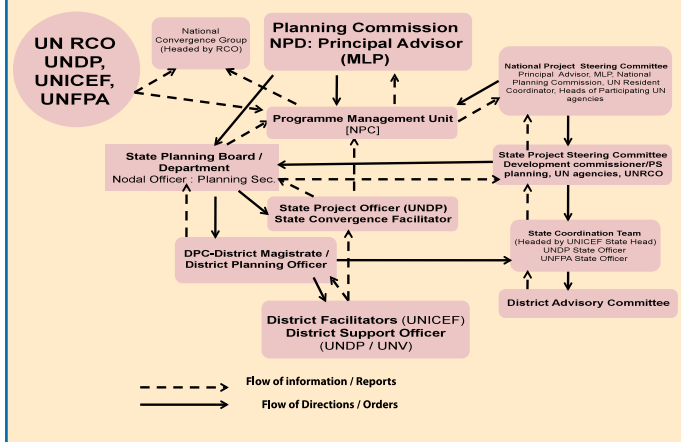


## Govt - UN Joint Programme on Convergence, Jharkhand

# PROJECT BRIEF

Name of the Project	Govt – UN Joint Programme on Convergence
Objective	To provide support to achieve Millennium Development Goals (MDGs) at District level.
Expected Outcomes	<p>Integrated and inclusive district planning adopted.</p> <p>Districts able to mobilize and utilize maximum of resources from Govt. programmes and other sources.</p> <p>Service Delivery under government programmes improved at local level.</p> <p>Monitoring used for management and planning purposes.</p>
Project Period	April 2008 to Dec. 2012
Levels of Implementation	National, State & District
National Nodal Agency	Planning Commission (Govt. of India)
State Nodal Agency	Deptt. of Planning & Development (Govt. of Jharkhand)
District Nodal Agency	District Planning Office (District Administration)
UN partner Agencies	UNDP, UNICEF, UNFPA & UNRCO
National Coverage	Thirty five (35) districts of Seven (7) states (Bihar, Chhattisgarh, U.P. Jharkhand, M.P., Odisha & Rajasthan)
State Coverage	Five (5) pilot districts i.e. Gumla, Hazaribagh, Pakur, Palamau & West Singhbhum
Budget	Approx. Rs. 1(one) crore per year for Jharkhand

## GoI – UN JPC Structure



## MAJOR ACTIVITIES

- District Human Development Reports (DHDRs).
- Millennium Development Goals (MDGs) report of Districts.
- Participatory, inclusive and Integrated Decentralized District Planning.
- Capacity Building of State Institutes i.e. SIRD & ATI for Decentralized Planning.
- Capacity Building of Govt. Officials, Elected Representatives, Community Leaders for Decentralized Planning and Monitoring of Development Programmes.
- Change Management Initiative.
- Gender Sub-planning & Gender Budgeting.
- Analysis of major Flagship schemes, identify bottlenecks and give feedback to district administration to improve effectiveness of programmes.
- Mapping of Resources (including human resource), Budget allocation and Fund flow to districts to increase effective utilization of Fund and Resources for better result of Development Schemes and Programmes.
- Convergence of various Govt. Schemes and Programmes for optimum use of Resources and better Outcomes.
- Community Monitoring through Public Hearing, Social Audit and PAHELI (People's Audit of Health, Education and Livelihoods) programmes.
- Action Research Studies, Documentation of Innovation, Best Practices and Case Studies to give feedback to District Administration, State Govt. and Planning Commission on Planning, Monitoring and Convergence issues.

### Address of State Nodal Office

GoI – UN Joint Programme on Convergence  
 Department of Planning & Development  
 Nepal House (Ground Floor)  
 Doranda, Ranchi – 834 002, Jharkhand  
 Tel & Fax : 0651 2490296

E-mail : [jpc.jkd@gmail.com](mailto:jpc.jkd@gmail.com) • [www.jharkhand.gov.in](http://www.jharkhand.gov.in)