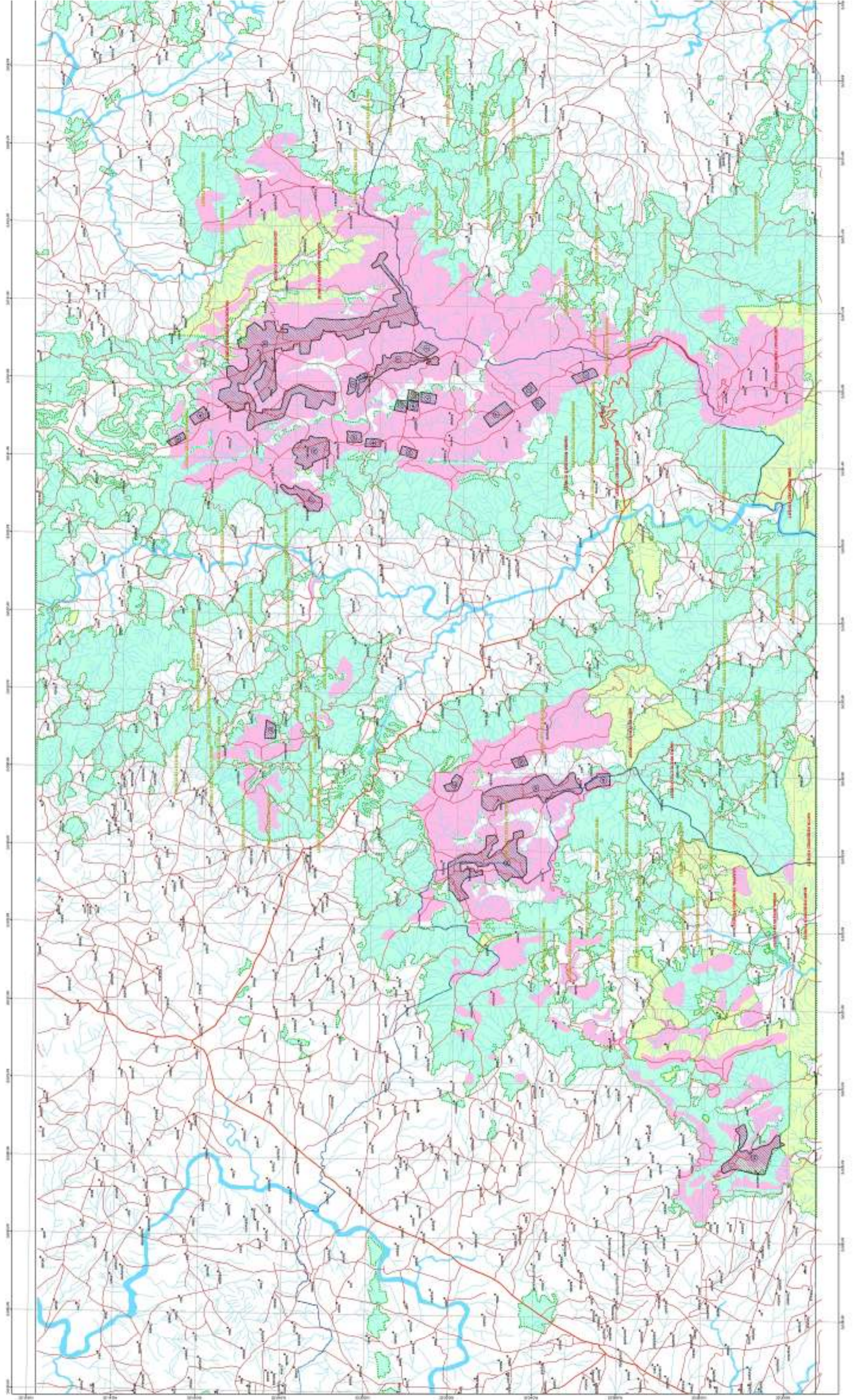


MAP SHOWING BAUXITE AND LATERITE CAPPIINGS AND LEASE HOLD AREAS OF GUMLA, LOHARDAGA AND LATEHAR DISTRICT



MINES & GEOLOGY
DEPARTMENT
OF JHARKHAND

| LEASE | SL. NO. | AREA (HA) |
|-------|---------|-----------|
| 1 | 1 | 100 |
| 2 | 2 | 150 |
| 3 | 3 | 200 |
| 4 | 4 | 250 |
| 5 | 5 | 300 |
| 6 | 6 | 350 |
| 7 | 7 | 400 |
| 8 | 8 | 450 |
| 9 | 9 | 500 |
| 10 | 10 | 550 |
| 11 | 11 | 600 |
| 12 | 12 | 650 |
| 13 | 13 | 700 |
| 14 | 14 | 750 |
| 15 | 15 | 800 |
| 16 | 16 | 850 |
| 17 | 17 | 900 |
| 18 | 18 | 950 |
| 19 | 19 | 1000 |
| 20 | 20 | 1050 |
| 21 | 21 | 1100 |
| 22 | 22 | 1150 |
| 23 | 23 | 1200 |
| 24 | 24 | 1250 |
| 25 | 25 | 1300 |
| 26 | 26 | 1350 |
| 27 | 27 | 1400 |
| 28 | 28 | 1450 |
| 29 | 29 | 1500 |
| 30 | 30 | 1550 |

